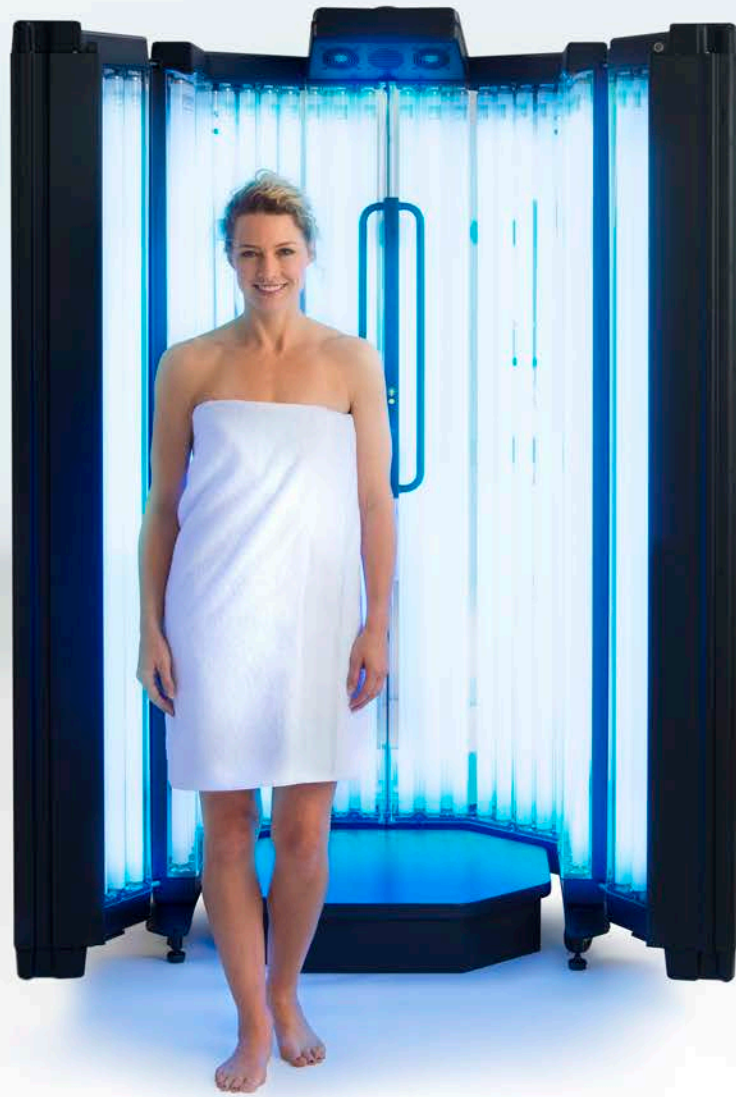


NeoLux

FULL-BODY PHOTOTHERAPY CABINET



Daavlin⁺
Let's Be Clear

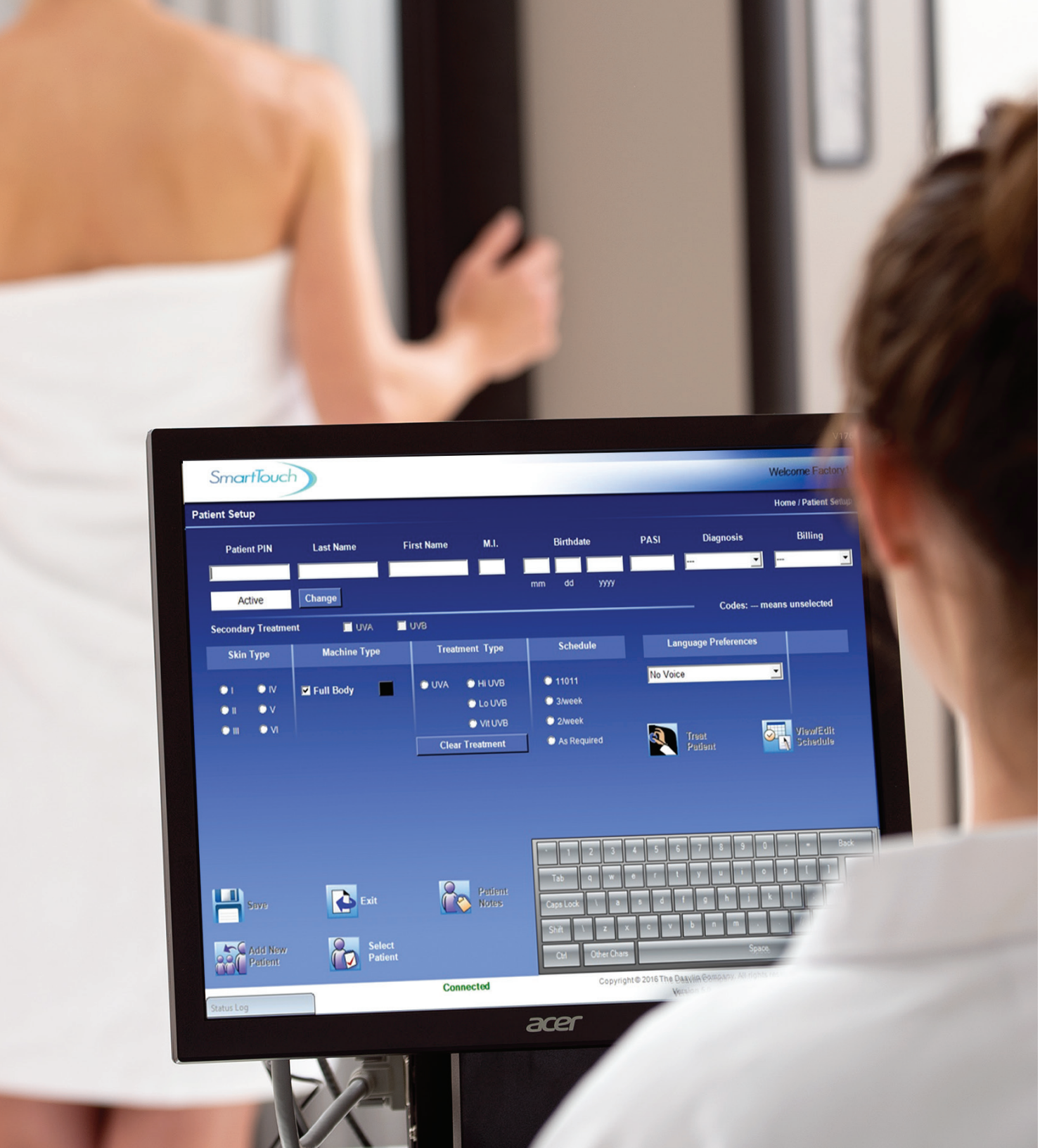




Introducing
NeoLux

NeoLux™ combines the power of light with the beauty of innovation

NeoLux, Daavlin's latest innovation, combines many unique features that together set it apart from the competition, among them, SmartTouch™ control, Crystal Cool™ temperature management, Crystal Clear™ acrylic interior and more. Backed by a comprehensive warranty, NeoLux is safer, more efficient and more user intuitive than any phototherapy unit currently available.

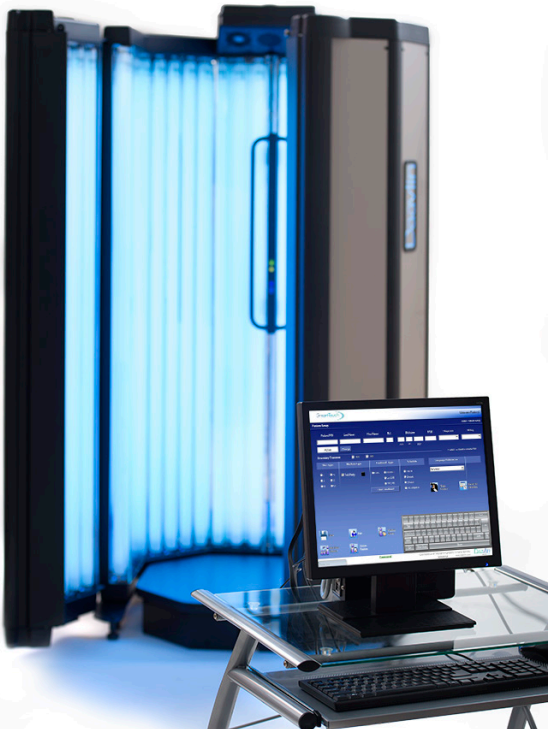


Precision Controls

SmartTouch can be configured as a stand-alone system in offices with just one device, or as a network, allowing several devices to be linked with a central operating system and common patient database. Scheduling patients between devices is effortless.

SmartTouch and SmartTouch Network are EMR compatible.

NeoLux can also be equipped with Flex Control, a dosimetry option that does not include the record-keeping/patient tracking capabilities.



SmartTouch™

Industry-Leading Control Technology

NeoLux features SmartTouch™ technology, Daavlin's proprietary control system that provides a host of benefits to both the practice and the patient. SmartTouch incorporates such features as permanent patient records, built-in protocols, operator tracking, and monitoring systems that prevent errors in dosing. SmartTouch includes numerous unique features:



Patient Amenities

During treatment, some patients may become anxious about how much time has elapsed or may feel forgotten. SmartTouch includes a unique voice system that announces the predicted treatment time prior to beginning the session followed throughout by a reassuring, periodic countdown. This provides the patient with important information about his or her therapy and acts as an alert if the time varies significantly from past treatments.

Data Management

Treatment information is entered using a keyboard, mouse and monitor, all of which can be remotely located for additional security. An electronic record is kept of the date, time, dosage and length of each treatment, along with the operator's name. Contemporaneous notes about the patient and treatment can be recorded to comply with billing requirements.

Controlling the phototherapy center from a nursing station is convenient and easy.

The system stores thousands of treatment records, tabulates patient data, and is EMR compatible. Patient treatment records and other reports, such as daily usage data, are easy to print.

Real-Time Power

Integrating dosimetry systems constantly measure energy output, adjusting for the usual fluctuations experienced during a therapy session. The SmartTouch power tracking display is a visual reminder that the patient is receiving precise, consistent doses, regardless of conditions that affect the device.

Unparalleled Safety

SmartTouch built-in treatment protocols allow you to set treatment parameters for each patient, making it impossible to inadvertently deliver an excessive dose or the wrong kind of light in combination systems. A system of functional authority allows only designated operators to make treatment decisions that vary from the built-in protocols, while nonsupervisory operators can be restricted to simply following the prescribed regimen.



Patient Comfort

Functionality and patient safety are of paramount importance, and NeoLux™ delivers in a big way.

The NeoLux design uses as few as 40 lamps instead of the 48 traditionally found in phototherapy systems. The unique new UV reflecting system enhances efficiency by directing a higher portion of emitted energy into the patient chamber, resulting in shorter treatment times and a more pleasant patient experience. Fewer lamps mean reduced re-lamping costs, lower electrical consumption, less heat generation and potentially lower electrical service installation costs.

Another unique new feature, the Crystal Cool™ temperature management system, uses artificial intelligence technology to keep the lamps at their optimum operating temperature within the specific conditions of your office or clinic. This advanced system keeps your patients cooler while extending the life of the lamps and maximizing their operating efficiency.



An internal on/off switch allows the patient to pause and continue treatment as necessary. Should a patient need to exit the cabinet, simply opening the doors places the treatment on hold.



Two cooling fans with a patient controlled on/off switch are available for patients who want to feel airflow during their treatment.



The NeoLux full-body phototherapy cabinet is roomy and open at the top. Its double doors open wide enough to comfortably fit plus sized patients. The platform can be removed to accommodate a wheelchair.



NeoLux features the new Crystal Clear™ acrylic interior, which protects from accidental lamp contact by the patient and provides unobstructed light delivery. In addition to being easy to clean, the sealed acrylic panels prevent dust build-up on the lamps.





Sample Accent Designs
(for more options, visit
daavlin.com/neolux)



Dressed to Impress

The impression that your office or clinic makes on a patient is important. NeoLux™ has numerous customizable design options that will complement the décor of any office or clinic. To the left is a sampling of available panel designs for the NeoLux. Many more are available at Daavlin.com/NeoLux.

The NeoLux phototherapy system is the most space-efficient professional phototherapy device available. Daavlin's signature double door design yields a "footprint" or total space occupied that is smaller than competitive units, including older Daavlin models, yet doesn't compromise patient comfort. NeoLux may fit in a space previously thought to be too small for productive use.

- 1 Open top and spacious interior comforts the claustrophobic patient and is large enough to accommodate a wheel chair.
- 2 Standard color or customizable decorative panels match any décor.
- 3 Large interior handle grips enhance patient safety and stability.
- 4 UV-transmitting acrylic lamp shields keep dirt and debris from accumulating and prevent patients from coming in contact with the lamps.
- 5 Intelligent lamp cooling system provides optimum environment for the lamps and extends lamp life.
- 6 Removable platform elevates patient to provide treatment to lower extremities.
- 7 Top-mounted cooling fans keep the patient comfortable without stirring up dust and debris as seen with floor-mounted fans.
- 8 Speaker provides audible messages to instruct and reassure the patient. Available in a variety of languages, customizable by patient.
- 9 UV blocking window allows patient monitoring during treatment while protecting privacy.
- 10 SmartTouch™ Network connects multiple devices within your office. (Flex integrating dosimetry control not pictured.)



Support

Delivery and installation will cause surprisingly little disruption to your office routine. Unlike some competitive devices, which are virtually built on-site, Daavlin's NeoLux rolls into the office on castors and is almost immediately ready for in-service training.

Our Technical Service is unparalleled in the industry. Our team of experienced field technicians provides first class, professional, on-site assistance while our knowledgeable in-house technical support staff is standing by to answer any questions.

NeoLux is backed by Daavlin's comprehensive warranty. Full details are available upon request.

In addition to our hands-on approach to service, Daavlin offers a wide range of maintenance and extended warranty programs so that the phototherapy equipment will perform reliably for years to come.

Monday through Thursday, Daavlin's service hours extend until 7:00 pm EST.



During normal business hours, we have Spanish and French speaking representatives available.

EN

ES

FR

Specifications

NeoLux

Height:	84 in (213 cm)
Width (with doors closed):	41 in (104 cm)
Width (with doors open):	53 in (135 cm)
Depth (with doors closed):	40 in (102 cm)
Depth (with doors open):	50 in (127 cm)

NeoLux *Plus*

Height:	94 in (239 cm)
Width (with doors closed):	41 in (104 cm)
Width (with doors open):	53 in (135 cm)
Depth (with doors closed):	40 in (102 cm)
Depth (with doors open):	50 in (127 cm)

Measuring about nine inches (25 cm) taller than a conventional phototherapy cabinet, the NeoLux Plus treats your tallest patients without special accommodation.



Daavlin⁺
Let's Be Clear





To learn more about the many benefits of NeoLux and how it can improve your clinical practice, email us at info@daavlin.com or go to Daavlin.com/NeoLux.

Or, simply call a Daavlin Sales Representative at 1-800-322-8546.

Outside the US?
Call 1-419-633-3369
or email us at global@daavlin.com

